

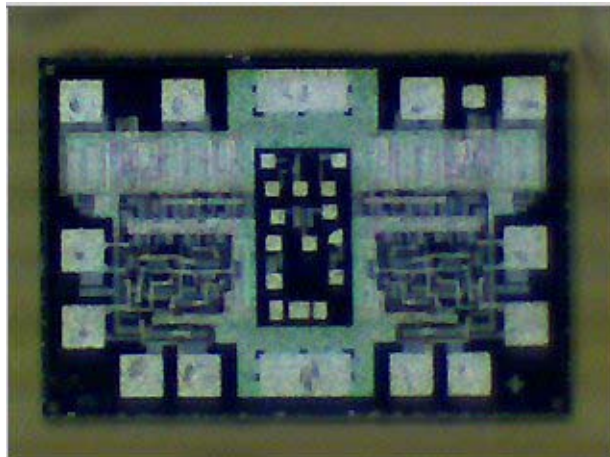


# *Sierra Components, Inc.*

2222 Park Place • Suite 3E • Minden, Nevada 89423

Phone: 775.783.4940 Fax: 775.783.4947

Chip back potential is the level which bulk silicon is maintained by on-chip connection, or it is the level to which the chip back must be connected when specifically stated below. If no potential is given the chip back should be isolated.



**Top Material: Al**  
**Backside Material: Si**  
**Bond Pad Size:**  
**Backside Potential:**  
**Mask Ref:**

**APPROVED BY: MG**

**DIE SIZE : 58 x 40 Mils**

**DATE: 12/23/05**

**MFG: Signetics**

**THICKNESS:**

**P/N: 54S04**